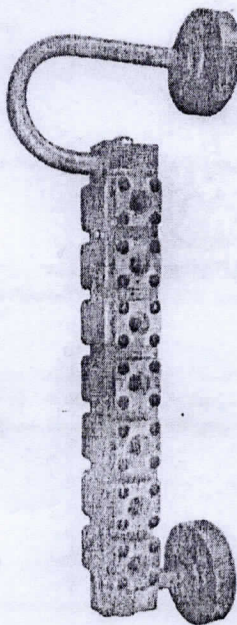
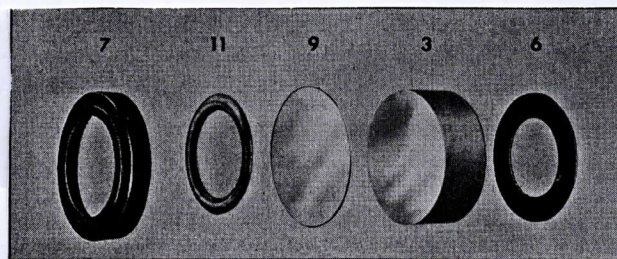


#### STANDARD PARTS

| Item no. | Part           | Part no.  |
|----------|----------------|-----------|
| 1        | Body           |           |
| 2        | Cover - 4 bolt | 112925    |
| 3        | Glass          | *         |
| 4        | Spring cone    | 102875-01 |
| 5        | Washer         | 917211-01 |
| 6        | Cushion gasket | *         |
| 7        | Clip ring      | *         |
| 8        | Retaining ring | 919051    |
| 9        | Mica           | *         |
| 10       | Cap screw      | 954181-10 |
| 11       | Sealing gasket | *         |

\* Supplied in kit form. Kit number 923321.  
High pressure gauge (4-bolt covers)



#### GENERAL APPLICATION

Color-Port gauges provide continuous indication of boiler water levels as required by the ASME Boiler and Pressure Code PG-60.

#### TECHNICAL DATA

|                         |                                       |
|-------------------------|---------------------------------------|
| Sizes:                  | 1/2" to 3/4" (15 to 19 mm)            |
| Max. pressure           |                                       |
| Low pressure design:    | 850 psi (59 bar)                      |
| Medium pressure design: | 1800 psi (124 bar)                    |
| High pressure design:   | 3000 psi (207 bar)                    |
| Number of ports:        | 5 to 26                               |
| Visibility:             | 12 1/16" to 72 1/16" (310 to 1843 mm) |